

# Knowing Your CD-ROM Drive

CD3620E  
CD-ROM Drive

Your 36X CD-ROM drive is just like a CD player. It allows you to play audio CDs, skip or stop a track, and eject the CD using the controls located on your drive's front panel.

But your CD-ROM drive is also more than just a CD player. It comes with a software application that can transform your PC into an even more versatile CD player. A unique feature of this 36X CD-ROM drive is the infrared receiver on its front panel. This allows you to control the drive and even some system applications via a remote control.

This leaflet contains the following information regarding your CD-ROM drive:

- A description of your drive's front and rear components
- A list of its general features and technical specifications



Refer to your drive's *Installation Guide* for more information pertaining to the installation and usage of the drive.



**CAUTION:** Use of controls or adjustments or performance of procedures other than those specified herein may result in hazardous radiation exposure.

---

## Minimum System Requirements

The minimum system requirements for the 36X CD-ROM drive are as follows:

- A Pentium 100 MHz with 8 MB of RAM  
(16 MB of RAM recommended for optimum performance)
- Windows 98 or Windows 95 or Windows 3.1x with DOS 6.0 or later
- 6 MB of hard disk space for the CD-ROM driver and software
- Onboard IDE connector

# Front Panel

Your drive's front panel has various controls as shown in Figure 1.

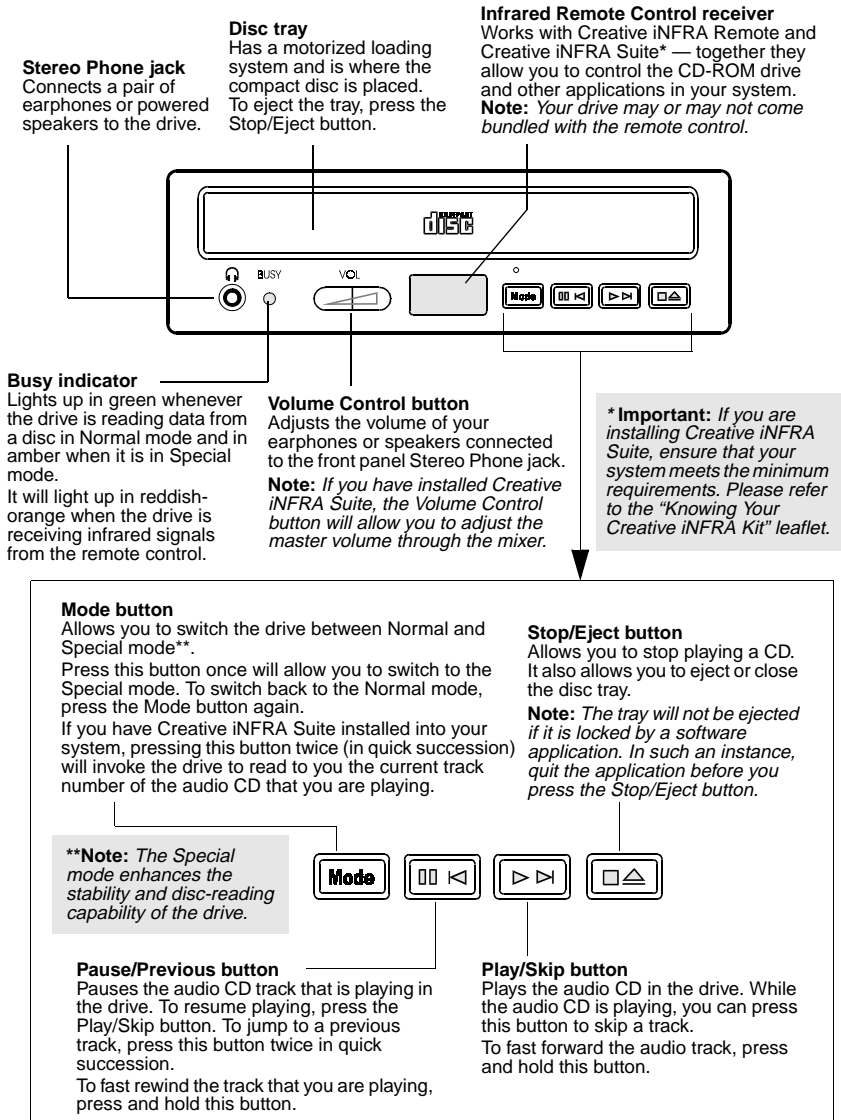


Figure 1: Front panel of your CD-ROM drive.

# Rear Panel

Your drive's rear panel has various connectors as shown in Figure 2.

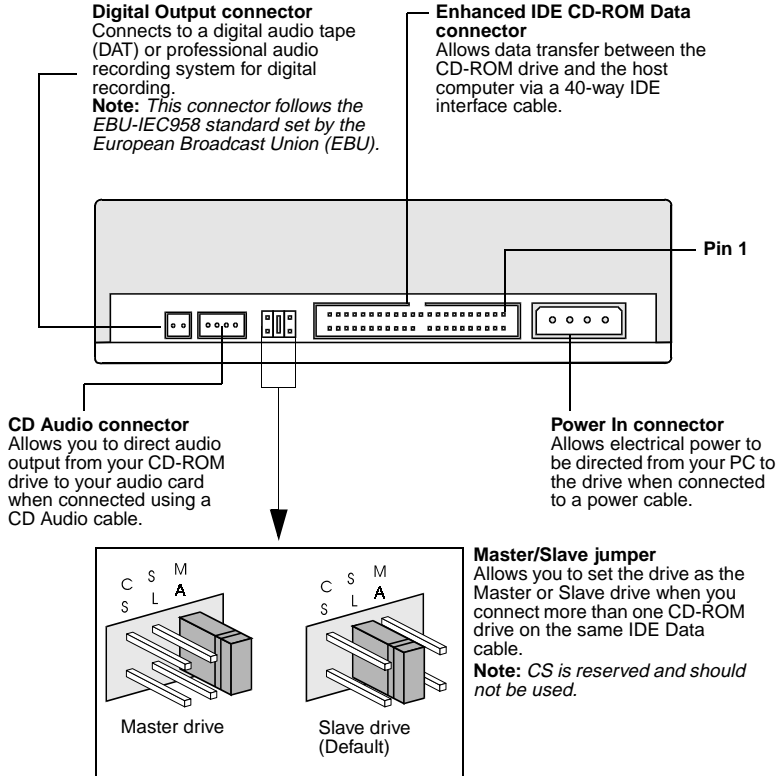
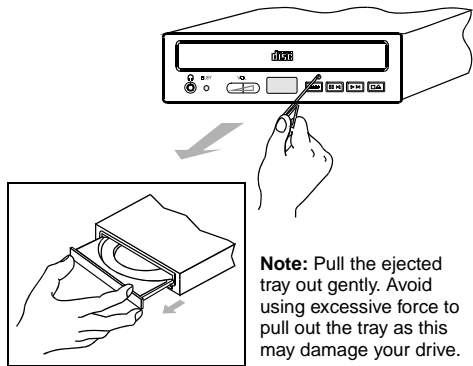


Figure 2: Rear panel of your CD-ROM drive.

---

## Ejecting the Disc Tray

When there is a power or system failure, you can eject the disc tray by inserting and pushing a straightened paper clip into the Eject hole and pull out the ejected tray gently.



**Note:** Pull the ejected tray out gently. Avoid using excessive force to pull out the tray as this may damage your drive.

Figure 3: Ejecting the disc tray.

---

## Features and Specifications

### General Features

Transfer Rate	36X speed. This means that the drive can supply a maximum stream of information at 5,400 KB per second to the PC bus.
CD-ROM Standards	The drive meets the MPC level 2 and 3 requirements for CD-ROM. It is also single and multi-session compliant.
Multiple Drive Support	The drive allows you to connect more than one CD-ROM drives to your PC.
Infrared Receiver	The drive can be controlled remotely when used together with Creative iNFRA Remote and Creative iNFRA Suite installed on the host computer.

### Technical Specifications

#### Physical Dimensions

Height	42 mm
Width	149 mm
Depth	203 mm
Color	PC white

## Performance Characteristics

Access Time ( $1/3$ Stroke)	85 msec (Typical)
(Full Stroke)	150 msec (Typical)
Buffer Memory	256 KB
Data Transfer Rate (Sustained)	5,400 KB/sec (36X)
Read Error Rates	
Soft Read Error	$< 10^{-9}$
Hard Read Error	$< 10^{-12}$
Seek Read Error	$< 10^{-6}$
Mean Time Between Failure	100,000 Power On Hour (POH) at 15% Duty
Power Supply	5 Volts DC ( $\pm 5\%$ ), 1.0 Amp (max) 12 Volts DC ( $\pm 10\%$ ), 1.5 Amp (max)
Disc Formats Supported	CD-Audio CD EXTRA, CD-Plus, and Enhanced CD CD-I CD-R and CD-RW CD-ROM Mode 1 and Mode 2 CD-ROM/XA Mode 2, Form 1 and 2 Photo CD Pre-Gap CD Video CD



Refer to the Glossary in the *Installation Guide* for a detailed explanation of the various CD formats.

## Typical Audio Performance

Line-Out	
Channel Separation	$> 65$ dB (at 1 kHz)
Frequency Response	20 Hz to 20 kHz ( $\pm 3$ dB)
Output Level	$0.7 V_{\text{rms}}$ ( $\pm 20\%$ at 50 k $\Omega$ )
Signal to Noise Ratio	$> 75$ dB (at 1 kHz)
Total Harmonic Distortion	0.1% (at 1 kHz)
Headphone	
Channel Separation	$> 50$ dB (at 1 kHz)
Frequency Response	100 Hz to 20 kHz ( $\pm 3$ dB)
Output Level	$0.6 V_{\text{rms}}$ ( $\pm 20\%$ at 32 $\Omega$ )
Signal to Noise Ratio	$> 65$ dB (at 1 kHz)
Total Harmonic Distortion	0.15% (at 1 kHz)

## Environmental Operating Limits

Ambient Temperature (No Condensation)

Operating 5 to 45°C  
Storage -25 to 55°C

Relative Humidity (No Condensation)

Operating 10 to 85%  
Storage 10 to 90%

## Declaration of Conformity

According to the FCC96 208 and ET95-19 documents,

Name: ***Creative Labs Inc.***

Address: ***1901 McCarthy  
Boulevard  
Milpitas, CA. 95035  
United States  
Tel: (408) 428-6600***

declares under its sole responsibility that the product

Trade Name: ***Creative Labs***

Model Number: ***CD3620E***

**has been tested according to the FCC / CISPR22/85 requirements for Class B devices and found compliant with the following standards:**

EMI/EMC: ANSI C63.4 1992, FCC Part 15 Subpart B

This device complies with part 15 of the FCC Rules.

Operation is subject to the following two conditions:

1. This device may not cause harmful interference, and

2. This device must accept any interference received, including interference that may cause undesirable operation.

Ce matériel est conforme à la section 15 des règles FCC. Son Fonctionnement est soumis aux deux conditions suivantes:

1. Le matériel ne peut être source D'interférences et
2. Doit accepter toutes les interférences reques, Y compris celles pouvant provoquer un fonctionnement indésirable.

***Compliance Manager  
Creative Labs, Inc.  
3th August 1998***

No part of this publication may be reproduced or transmitted in any form or by any means without the prior written consent of Creative Technology Ltd.

Copyright © 1998 Creative Technology Ltd. All rights reserved.

Version 1.0  
July 1998

Sound Blaster is a registered trademark of Creative Technology Ltd.

All other products are trademarks or registered trademarks of their respective owners.