



Creative iNFRA Remote

In This Leaflet

Introduction	1
Using Creative iNFRA Manager	1
Using iNFRA Menu	3
Knowing Creative iNFRA Remote.....	4
Maintaining Creative iNFRA Remote.....	6

Introduction

Creative iNFRA Remote is a special credit-card sized infra red remote control for your BlasterPC. Used together with Creative iNFRA Manager, iNFRA Remote allows you to surf the Web, and play your favorite multimedia files (MIDI, Wave, and others) and discs (audio CDs, Video CDs, and DVD-Videos) at the touch of a remote control button.

Using Creative iNFRA Manager



For the description on each setting found in the iNFRA Manager dialog box, right-click the setting and then click What's This.

To start iNFRA Manager

- ▶ Click the Settings tab on the Creative Launcher, and then click the Infra Manager icon. Alternatively, go to the Control Panel and double-click the Infra Manager icon.

To open Help on Creative iNFRA Manager

1. In the iNFRA Manager dialog box, right-click the item whose description you want to display.
2. Click What's This.

To switch between the iNFRA Manager icon and the Status Display

To set iNFRA Manager properties

1. Right-click the iNFRA Manager icon or the Status Display.
2. On the menu that appears, click Properties.
The iNFRA Manager dialog box appears.

After iNFRA Manager is started, either the iNFRA Manager icon will be displayed in the right-hand corner of the taskbar, or the floating Status Display will be shown on the desktop.

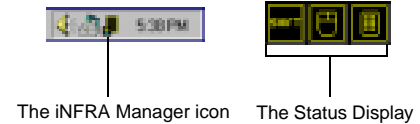


Figure 1: Shortcuts to iNFRA Manager.

To switch from the iNFRA Manager icon to the Status Display

1. In the right-hand corner of your taskbar, right-click the iNFRA Manager icon.
2. On the menu that appears, click Show.

To switch from the Status Display to the iNFRA Manager icon

1. On your desktop, right-click the Status Display.
2. On the menu that appears, click Hide.

Using iNFRA Menu

The iNFRA menu is a menu that allows you to start applications that you have configured in the iNFRA Manager dialog box using the iNFRA Remote. It also allows you to switch between applications that are currently running.

To use iNFRA Menu

1. Aim the iNFRA Remote control at BlasterPC's infra red receiver and press the Menu button. The iNFRA Menu similar to Figure 2 appears.
2. Press the number that represents the application you want to switch to. You can switch to the application by clicking it on the iNFRA Menu.

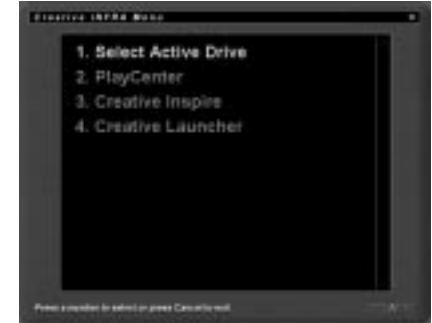


Figure 2: The iNFRA Menu.

Knowing Creative iNFRA Remote

Creative iNFRA Remote has various buttons as shown in Figure 3.

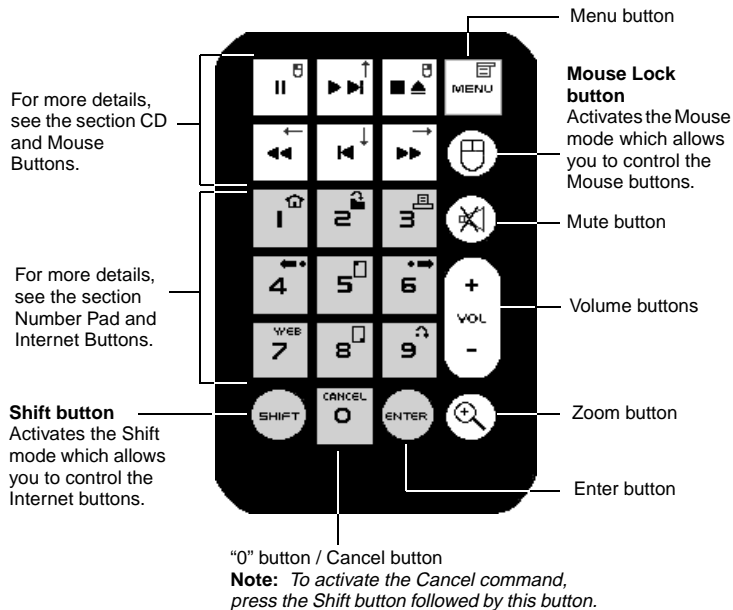


Figure 3: Creative iNFRA Remote.

To start the Web browser

1. Ensure that Shift mode is enabled (verify that the Shift icon on the Status Bar display is lighted). If it is not, press your remote control's Shift button.
2. Press the Web button (the "7" button) to start the default Web browser.

CD and Mouse Buttons



You must have an audio CD, DVD-disc, or Video CD playing in the PC-DVD drive before you can use the CD buttons. To use Creative iNFRA Remote to move your mouse pointer, press the Mouse Lock button

The CD and Mouse buttons allow you to control your PC-DVD drive and mouse pointer.

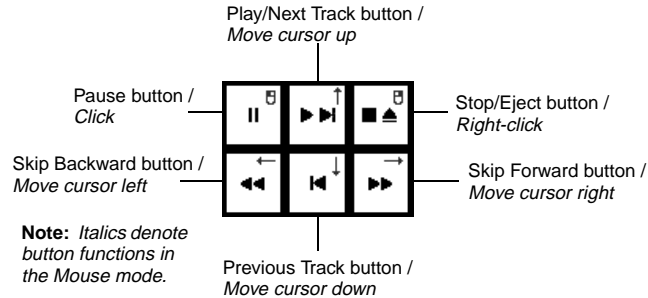


Figure 4: CD and Mouse buttons.

Number Pad and Internet Buttons



To play a particular track on your disc, disable the Shift mode, and press the number of the track, followed by the Enter or the Play button.

The Number pad allows you to play a particular track on your disc or switch to a particular item on the iNFRA Menu.

The Internet buttons allow you to control your Web browser.

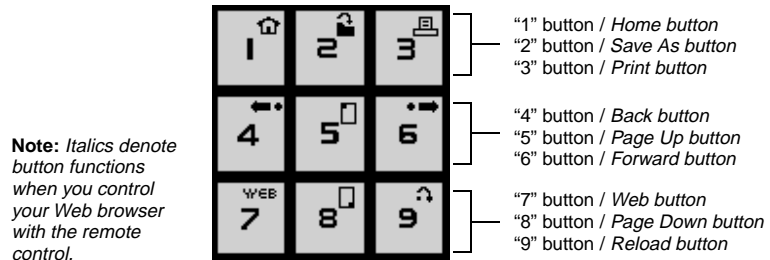


Figure 5: Number pad and Internet buttons.

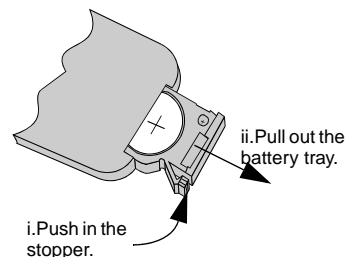
Maintaining Creative iNFRA Remote

To ensure that Creative iNFRA Remote performs up to your expectations, please take note of the following:

- ❑ Do not bend Creative iNFRA Remote. This may damage its internal circuitry and infrared source.
- ❑ Always point the remote control towards the BlasterPC's infra red receiver to execute a command. There must be a straight line of vision between the remote control's infrared source, and BlasterPC's infra red receiver.
- ❑ Do not block the infrared source with your fingers while executing a command.
- ❑ Store the remote control in a dry and cool place.

To change the battery

1. Push in the stopper (see Figure 6).
2. Pull out the battery tray.
3. Replace the old battery with a new one.



Note: Creative iNFRA Remote requires a single 3-volt lithium battery to function. The battery tray is located on the reverse side of the remote control.

Figure 6: Pulling out the battery tray.

No part of this publication may be reproduced or transmitted in any form or by any means without the prior written consent of Creative Technology Ltd.

Copyright © November 1998 Creative Technology Ltd. All rights reserved.

Version 1.0

Sound Blaster is a registered trademark of Creative Technology Ltd. All other products are trademarks or registered trademarks of their respective owners.